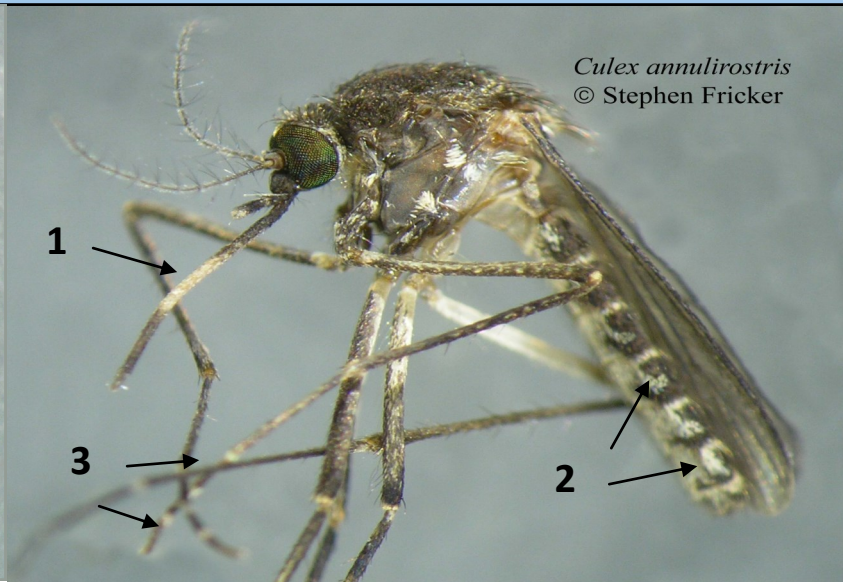


Mosquito Fact Sheet 2:

Culex annulirostris

Prepared by Stephen Fricker, Mosquito and Public Health Research Group, University of South Australia



Larva distinctive features;

1. Typically with two dark patches on abdomen.
2. Long siphon (7-8 X long as wide) with 6 hair tufts.
3. Antennae pale with end third dark

Adult Female distinctive features;

1. Proboscis with pale band in middle.
2. Abdomen with distinctive pattern
3. Leg segments with pale bands.

Ecology

This medium sized brown species is found throughout Australia, particularly in warmer weather following rain flooding. Studies have demonstrated adult dispersal of 7 km although in reality it is possibly further. The larvae of this species are typically found in fresh and brackish water environments including swamps, lagoons, transient pools. It is an opportunistic feeder biting a variety of hosts including humans, other mammals and birds during the day and at dusk.

Identification

Adults are a medium sized brownish mosquito with a distinct pale band at the midpoint of the proboscis, a rounded abdomen, and pale bands at the base of each leg segment. The larvae have a long siphon, antennae pale on the basal $\frac{2}{3}$ and typical with two dark dorsal patches on abdomen.

Disease Risk

This species is considered to be one of the most significant vectors of arbovirus such as Ross River Virus and Barmah Forest virus in Australia.